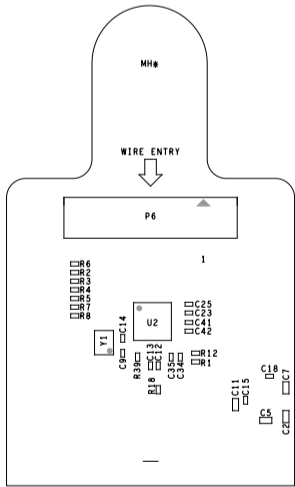



ASSEMBLY NOTES:

- 1. BOARD ACCEPTABILITY PER ANALOG DEVICES, INC. SPECIFICATION TST00119 (LATEST REVISION).
- 2. REPAIRS PER IPC-7711/21(LATEST REVISION) ARE ALLOWED.
- 3. REPAIRS ARE NOT ALLOWED IN SOLDERMASK FREE AREAS ON EITHER SIDE OF THE BOARD.
- 4. RoHS COMPLIANCE: ASSEMBLY VENDOR SHOULD ASSURE COMPLIANCE WITH LEAD-FREE AND RoHS PCB ASSEMBLY STANDARDS (EU RoHS DIRECTIVE 2002/95/EC).
- 5. BOARDS TO BE SHIPPED SINGULATED AFTER ASSEMBLY PROCESS. SMOOTHEN EDGES AND FREE FROM BURRS AFTER DEPANELIZATION.



REVISIONS			
REV	DESCRIPTION	DATE	APPROVED
A	INITIAL RELEASE	31JUL24	C. CARBUNARU
B	ECR-122516	05SEP24	C. CARBUNARU







PRIMARY SIDE						
UNLESS OTHERWISE SPECIFIED DIMENSIONS ARE IN INCHES			APPROVAL		DATE	
			TEMPLATE ENGINEER N/A		N/A	
TOLERANCES			HARDWARE SERVICES M. VALE		31JUL24	
DECIMALS	FRACTIONS	ANGLES	HARDWARE SYSTEMS N/A		N/A	
.XX -.010	--1/32	-- 2	TEST ENGINEER N/A		N/A	
.XXX -.005			COMPONENT ENGINEER A. EMPENSANDO		31JUL24	
.XXXX -.0050			TEST PROCESS N/A		N/A	
MATERIAL			HARDWARE RELEASE K. JABATAN		31JUL24	
			DESIGNER S. DE CASTRO		31JUL24	
			PTD ENGINEER C. CARBUNARU		31JUL24	
FINISH			CHECKER N/A		N/A	
			DO NOT SCALE DWG			
			SCALE		1 / 1	
			SCALE		1 / 1	
			SHEET		1 OF 2	

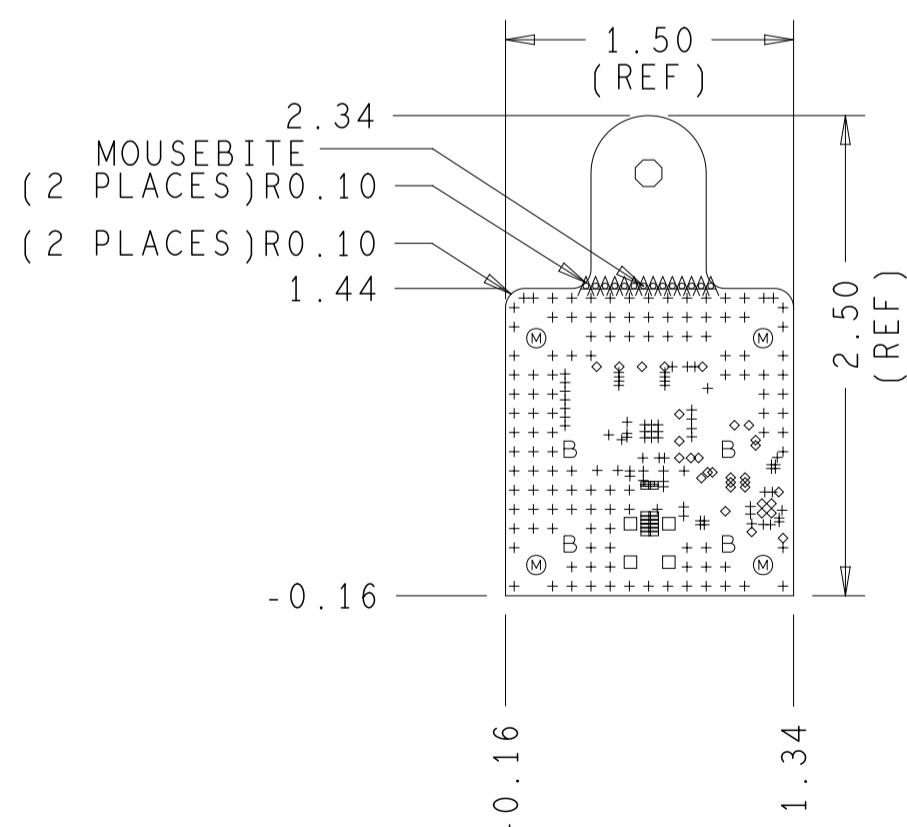
		ANALOG DEVICES		WWM DIVISION 804 WOBURN STREET WILMINGTON, MA 01887	
TITLE		F ABSORPTION			
		AD-MIPI2GMSL2-SL			
		CUSTOMER EVAL Z			
SIZE	FSCM NO	DRAWING NUMBER		REV	
C	24355	01-083646		B	

REVISIONS			
REV	DESCRIPTION	DATE	APPROVED
A	INITIAL RELEASE	31JUL24	C. CARBUNARU
B	ECR-122516	05SEP24	C. CARBUNARU

HOLE TOLERANCE

UNLESS SPECIFIED
PLATED: +/- 3 MILS
NON PLATED: +/- 2 MILS

DRILL CHART: TOP to BOTTOM				
ALL UNITS ARE IN MILS				
FIGURE	SIZE	PLATED	QTY	TOLERANCE/NOTES
	5.0	PLATED	17	DIA MAX
	7.0	PLATED	190	DIA MAX
	10.0	PLATED	31	
	59.0	PLATED	4	
	250.0	PLATED	1	
A	30.0	NON-PLATED	14	
B	85.0	NON-PLATED	4	
	106.0	NON-PLATED	4	



PRIMARY SIDE

UNLESS OTHERWISE SPECIFIED DIMENSIONS ARE IN INCHES			APPROVAL		DATE		<div><div></div><div>ANALOG DEVICES</div></div> <div>WWM DIVISION 804 WOBURN STREET WILMINGTON, MA 01887</div>						
TOLERANCES			TEMPLATE ENGINEER N/A		N/A		TITLE FABRICATION AD-MIPI2GMSL2-SL CUSTOMER EVAL Z						
DECIMALS FRACTIONS ANGLES XX .010 --1/32 -- 2 .XXX --.005 .XXXX --.0050			HARDWARE SERVICES M. VALE		31 JUL 24								
MATERIAL			HARDWARE SYSTEMS N/A		N/A								
			TEST ENGINEER N/A		N/A								
			COMPONENT ENGINEER A. EMPENSANDO		31 JUL 24								
			TEST PROCESS N/A		N/A								
			HARDWARE RELEASE K. JABATAN		31 JUL 24		SIZE FSCM NO DRAWING NUMBER REV C 24355 09-083646 B						
			FINISH		DESIGNER S. DE CASTRO							31 JUL 24	
			PTD ENGINEER C. CARBUNARU		31 JUL 24								
			CHECKER N/A		N/A								
DO NOT SCALE DWG						SCALE 1 / 1			SHEET 1 OF 2				

NOTES : UNLESS OTHERWISE SPECIFIED

1. DIMENSIONS ARE IN INCHES (EXCEPT WHERE NOTED).
ALL DOCUMENTS & SPECIFICATIONS REFERRED TO BELOW SHOULD BE THE LATEST REVISIONS.

MATERIAL : HOMOGENOUS MATERIALS IN THIS BOARD SHALL BE COMPLAINT WITH THE EU DIRECTIVE 2002/95/EC

2. BOARD MATERIAL: (USE CHECKED ITEMS)
- ☒ ISOLA 370HR OR SI1000-2 OR IT180 OR EQUIVALENT
☐ ISOLA-FR408HR OR EQUIVALENT
☐ ISOLA I5410
☐ MEGTRON 6
☐ NELCO-4000-13
☐ ROGERS 4350B
☐ ROGERS 3003
☐ ARLON 85N
☐ EM370D
☐ OTHER _____
3. ALL LAMINATES & BONDING MATERIALS SHOULD BE SELECTED FROM IPC-4101 OR IPC-4103, (TG>170 DEGC TD>300 DEGC)
UL FLAMMABILITY RATING 94V-0. BOARD MATERIAL & CONSTRUCTION SHALL MEET THE REQUIREMENTS OF UL796/UL796F.
4. REFER TO IPC-6010 SERIES, CLASS 2 FOR FABRICATION. WORKMANSHIP SHALL CONFORM TO IPC-A-600, CLASS 2.
5. REFER TO LAMINATION DIAGRAM FOR OVERALL BOARD THICKNESS. TOLERANCE APPLIES AFTER ALL LAMINATION AND PLATING PROCESSES. FINISHED THICKNESS MEASURED FROM TOP COPPER TO BOTTOM COPPER.
6. BOW & TWIST NOT TO EXCEED 0.0075 INCHES (0.75%) PER LINEAR INCH AND SHOULD BE MEASURED PER IPC-TM-650, METHOD 2.4.22.
7. ACCEPTABILITY PER ADI SPECIFICATION TST00115.

TOOLING:

8. IMPEDANCE REQUIREMENTS: IF NO STACKUP IS DEFINED, THE VENDOR IS ALLOWED TO ADJUST THE DIELECTRIC THICKNESS & TRACE WIDTHS TO MEET THE IMPEDANCE REQUIREMENT. IF SPECIFIED, THE VENDOR MUST MEET THE REQUIREMENTS LISTED IN THE IMPEDANCE TABLE. ANY ADJUSTMENT MADE TO THE DEFINED STACKUP, TRACE WIDTH & SPACING THAT IMPACT THE REQUIREMENTS MUST HAVE WRITTEN APPROVAL FROM ADI.
9. FILLET OPTIONS TO ENHANCE RELIABILITY AT PAD JUNCTIONS WHERE SPACING PERMITS.
☐ FILLETS ALLOWED
☒ FILLETS NOT ALLOWED
10. THIEVING:
☐ VENDOR MAY ADD THIEVING TO COMPENSATE FOR LOW COPPER DENSITY AREAS MAINTAINING A MINIMUM 0.100 INCH CLEARANCE FROM ALL COPPER FEATURES.
☒ VENDOR MAY NOT ADD THIEVING TO COMPENSATE FOR LOW COPPER DENSITY AREAS.
11. LAYER TO LAYER REGISTRATION SHALL BE WITHIN 0.003 INCHES.

FINISH:

12. DRILL SIZES ARE FINISHED HOLE SIZES. ALL HOLES SHALL BE LOCATED WITHIN 0.005 INCHES DTP, UNLESS SPECIFIED. MINIMUM BARREL PLATING OF 0.001 INCHES. PLATED HOLES SHALL NOT BE ROUGH OR IRREGULAR SO AS TO HINDER PROPER SOLDER WICKING. BARREL RELIEF ON SOLDERMASK ALLOWED IN UNFILLED VIA IN PAD HOLES.
13. PLATING SPECIFICATION:
☒ REFER TO LAMINATION DIAGRAM FOR FINISHED COPPER WEIGHT/THICKNESS REQUIRMENTS
THE STARTING COPPER WEIGHT/THICKNESS CAN VARY AS LONG AS THE FINISHED COPPER WEIGHT/THICKNESS IS NOT LESS THAN THE SPECIFIED VALUE.
14. SURFACE FINISH:
☒ IMMERSION GOLD (ENIG) 1.58-3.94 MICRO INCHES OVER 118-236 MICRO INCHES MIN. OF ELECTROLESS NICKEL PER IPC-4552
☐ OSP (ORGANIC SOLDERABILITY PRESERVATIVE)
☐ IMMERSION SILVER
☐ SOFT WIRE BONDABLE GOLD 30-50 MICRO INCHES OF SOFT WIRE
BONDABLE GOLD OVER 100-150 MICRO INCHES OF NICKEL
☐ EDGE CONNECTOR FINGERS ARE TO BE PLATED WITH 100 MICRO-INCHES (.0001") OF LOW STRESS NICKEL UNDER 30 MICRO-INCHES (.00003") OF GOLD
☐ OTHER _____
15. SOLDERMASK:
SOLDERMASK OVER BARE COPPER OR BARE GOLD (BOTH SIDES) TO MEET IPC-SM-840.
IF PRESENT, DO NOT MODIFY SOLDERMASK DEFINED PADS (MASK OPENINGS LESS THAN COPPER PAD) WITHOUT APPROVAL.
☒ LPI
☐ OTHER _____

COLOR
☒ GREEN
☐ OTHER _____
16. APPLY SILKSCREEN TO BOTH SIDES USING A NON-CONDUCTIVE, EPOXY BASED INK PER ARTWORK.
☒ WHITE
☐ OTHER _____

IMPEDANCE TABLE				
IMPEDANCE TOLERANCE: +/-10%				
LAYER	50 OHM TRACE WIDTH	65 OHM TRACE WIDTH	100 OHM TRACE WIDTH/SPACE	75 OHM TRACE WIDTH/SPACE
TOP	0.01050	-	0.00500/0.00500	-
L3_SIG	-	-	-	-
BOTTOM	0.01050	-	0.00500/0.00500	-

NOTE: DO NOT EDIT THIS TABLE MANUALLY. USE IMPEDANCE TABLE GENERATOR FROM MAXIMTOOLS.

TESTING:

17. FINAL ELECTRICAL TEST TO BE PERFORMED USING PROVIDED IPC-D-356A NETLIST OR ODB++ FORMAT FILE.
THE PCB SHALL HAVE A VERIFICATION STAMP.
18. A TIME DOMAIN REFLECTOMETER REPORT (TDR) FOR EACH IMPEDANCE CONTROLLED LAYER & A CERTIFICATE OF COMPLIANCE SHALL BE PROVIDED BY VENDOR AT TIME OF SHIPMENT. INSTANCES WHERE TDR TESTING CAN'T BE PERFORMED BECAUSE THE TRACE LENGTH IS TOO SHORT ON THE OUTER LAYERS AT THE PIN ESCAPES IS ACCEPTABLE. ALL OTHER INSTANCES MUST BE REPORTED.

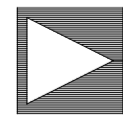
MISCELLANEOUS:

19. IF PRESENT, ALL BLIND/BURIED VIAS WITH AN ASPECT RATIO <1:1 TO BE PLATED SHUT WITH COPPER WHEN USED AS VIA-IN-PAD OR AS A STACKED VIA. BLIND/BURIED VIAS WITH AN ASPECT RATIO >1:1 TO BE FILLED WITH NON-CONDUCTIVE EPOXY.
20. FOR VIA FILL INFORMATION REFER TO DRILL CHART:
☐ NON-CONDUCTIVE EPOXY FILL ALL 0.XXXX INCHES DRILLED VIAS
☐ COPPER FILL ALL 0.XXXX INCHES DRILLED VIAS
21. INTENTIONAL SHORTS:
IF AN INTENTIONAL SHORT REPORT IS SUPPLIED AND DOES NOT MATCH THE FAB DATA THEN ADI APPROVAL IS REQUIRED.
22. PEMNUTS:
☐ PEMNUTS TO BE INSTALLED BY FABRICATOR
☐ PEMNUTS NOT TO BE INSTALLED BY FABRICATOR
☒ NOT APPLICABLE
23. MANUFACTURER TO ETCH/STAMP WITH PERMANENT NON-CONDUCTIVE INK
ON SECONDARY SIDE UNLESS OTHERWISE SPECIFIED:
A. UL CODE-FLAMMABILITY RATING FOR THOSE APPROVED MATERIALS (IF APPLICABLE)
B. DATE CODE
C. LOT NUMBER
D. MANUFACTURER LOGO
24. PANELIZATION:
BOARDS TO BE SHIPPED IN ARRAY AND KEPT INTACT
PANEL TO BE SUBJECTED TO CUSTOMERS APPROVAL
PANEL SOLDER PASTE STENCIL GERBER TO BE PROVIDED TO ANALOG
25. MINIMUM DESIGN LINE WIDTH IS .005 INCH.
26. MINIMUM DESIGN LINE SPACING IS .005 INCH.
- FAB NOTES REVISION: NOVEMBER 21 2022

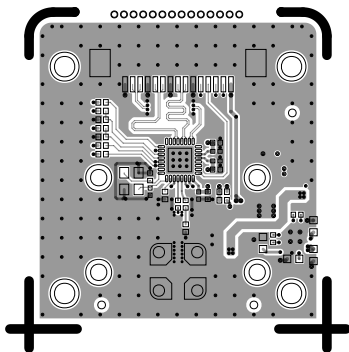
6 LAYER STACKUP

LAMINATION DIAGRAM				
LAYER NUMBER	LAYER NAME	COPPER THICKNESS (OZ, INCH)	DIELECTRIC THICKNESS (INCH)	MATERIALS
1	TOP	1 OZ, 0.0014"		FINAL CU (THICKNESS AFTER PLATING)
			0.005	ISOLA370HR / EQUIVALENT
2	L2_GND	1 OZ, 0.0014"		CU CLAD
			0.006	ISOLA370HR / EQUIVALENT
3	L3_SIG	0.5 OZ, 0.0007"		CU CLAD
			0.0314	ISOLA370HR / EQUIVALENT
4	L4_GND	0.5 OZ, 0.0007"		CU CLAD
			0.006	ISOLA370HR / EQUIVALENT
5	L5_GND	1 OZ, 0.0014"		CU CLAD
			0.005	ISOLA370HR / EQUIVALENT
6	BOTTOM	1 OZ, 0.0014"		FINAL CU (THICKNESS AFTER PLATING)
THE FINISHED PCB THICKNESS TO BE: 0.062" +/-10%				

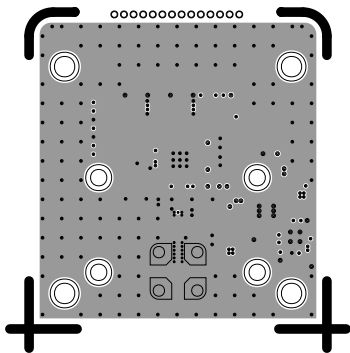
PRIMARY SIDE

	ANALOG DEVICES	WWM DIVISION 804 WOBURN STREET WILMINGTON, MA 01887	
		SIZE	REV
C	24355	DRAWING NUMBER 09-083646	B
SCALE	1/1	SHEET 2 OF 2	

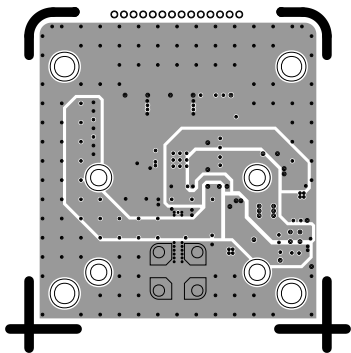
L1 PRIMARY
08-083646-01
REV B



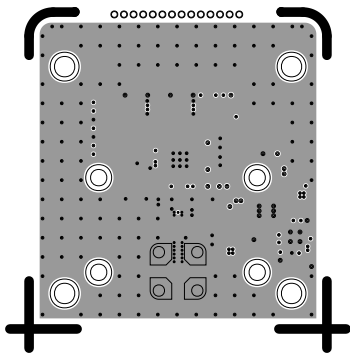
L2 GND
08-083646-07
REV B



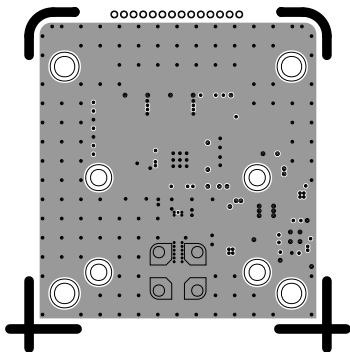
L3 SIG
08-083646-08
REV B



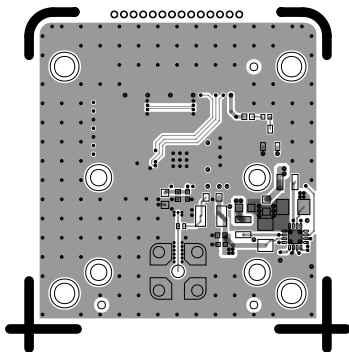
L4 GND
08-083646-09
REV B



L5 GND
08-083646-10
REV B



L6 SECONDARY
08-083646-02
REV B



SILK PRIMARY
08-083646-03
REV B



**ANALOG
DEVICES**
AHEAD OF WHAT'S POSSIBLE™



15
R6
R2
R3
R4
R5
R7
R8
P6
U2
Y1
C14
C9
R39
C13
R18
C12
C15
C34
C25
C23
C41
C42
R12
R1
C11
C15
C18
C7
AD-GMSL717MPI1-EVK

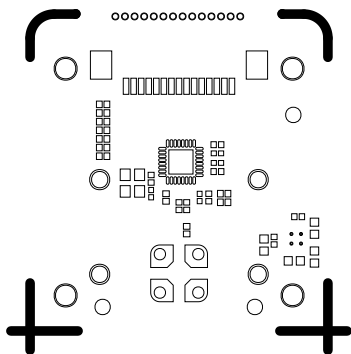
C5
C2

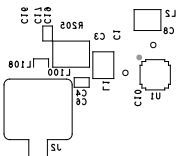


PRIMARY SIDE
08-083646 REV B Z

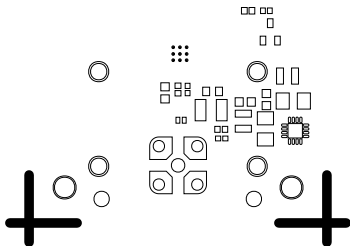
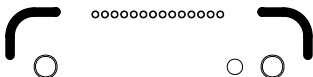


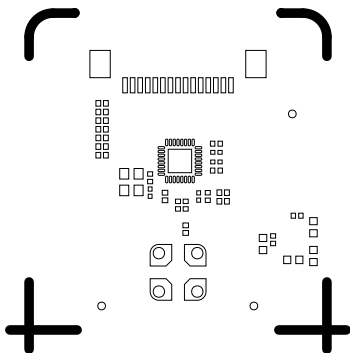
MASK PRIMARY
08-083646-04
REV B





MASK SECONDARY
08-083646-06
REV B





PASTE SECONDARY
08-083646-12
REV B

